

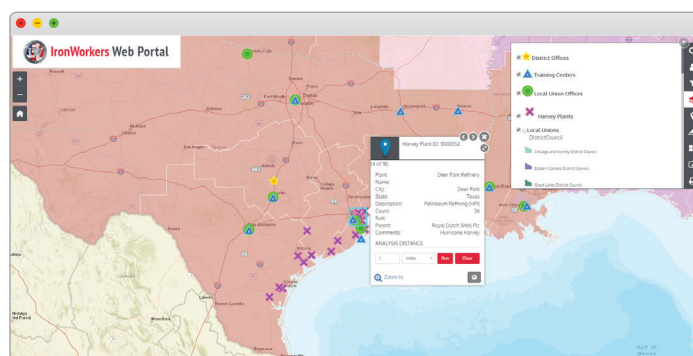


## Iron Workers International Geospatial Portal

The International Association of Bridge, Structural, Ornamental and Reinforcing Iron Workers Union, better known as Iron Workers International, has served as the official trade association for trained iron workers for well over a century, representing over 120,000 members in North America. By using a map interface (geospatial solution), Association members are benefiting from easily accessible location and contact information for union offices and training centers with the ability to identify skilled workers within a specified area.

The challenge for the Union was the association member database and boundary information existed primarily in local charter documents, with low resolution PDF maps, and limited MapPoint data. The MapPoint system lacked analytical functionality and usability was too complex for local and district officers. In addition, it was no longer supported by Microsoft. The system was also too complex for local and district officers to use. As a result, the manual process of determining the designated union for a job site often led to miscommunication and disputes.

The Iron Workers Leadership wanted to transform its archaic system into an external facing and web-enabled map.



This interface would enable the unions members, employers and leadership to visualize the local union and district council jurisdictional boundaries in an easy to use format. Iron Workers International partnered with GISinc to develop the new geospatial portal, which has streamlined job site evaluation and workforce analysis across North America by establishing a baseline for district and local union boundaries. The GIS solution utilizes Spinal Map, SQL Server, and ArcGIS Online hosted feature and tile services. The improved geospatial portal has resulted in more accurate data, fewer disputes, and quicker resolution supported by a common understanding of Local jurisdictions.

